



1,676 SF Industrial Space Touchmark Industrial Park

619 NORTH CLOVERDALE ROAD | BOISE, IDAHO



Property Highlights

- 1,676 total SF available for lease, with 1,000 SF of office space
- Available now
- Easily Accessible to the I-84, just 2 miles to the property and 15 minutes to the Boise Airport.



Contact

Charity Nelson – Director of Leasing
cnelson@adler-industrial.com

adler-industrial.com

 (+1) 208-506-7170

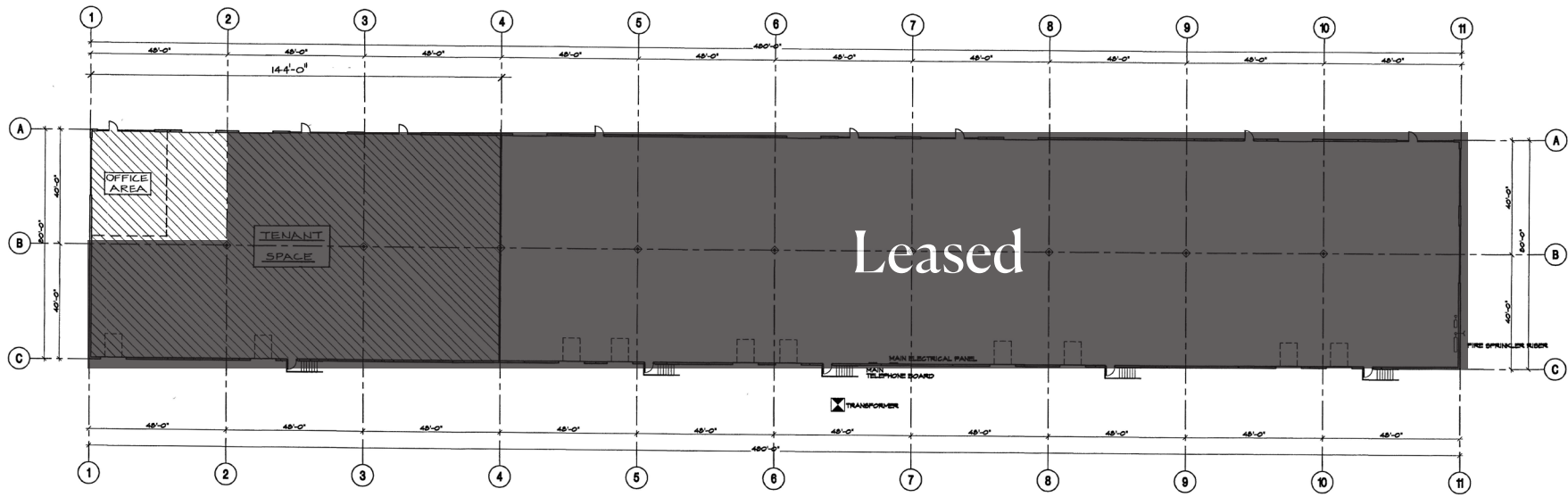
 8665 W. Emerald Street, Suite 200,
Boise, ID 83704, USA



1,676 SF Industrial Space

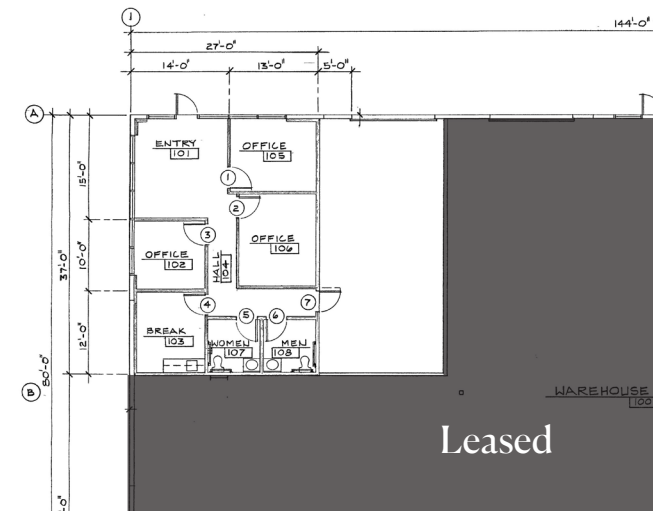
Available for Lease

**619 N. CLOVERDALE RD.
BOISE, IDAHO**



Property Information

- **BUILDING SIZE:** 100,800 SF
- **AVAILABLE FOR LEASE:** 1,676 SF
- **OFFICE SPACE:** 1,000 SF
- **STATUS:** Available Now
- **YARD SPACE:** +/- 2,500 SF Fenced Yard
- **CLEAR HEIGHT:** 24'
- **CONSTRUCTION:** Concrete Tilt
- **DOORS:** 1 Drive-In
- **LEASE TYPE:** NNN
- **YEAR BUILT:** 1997

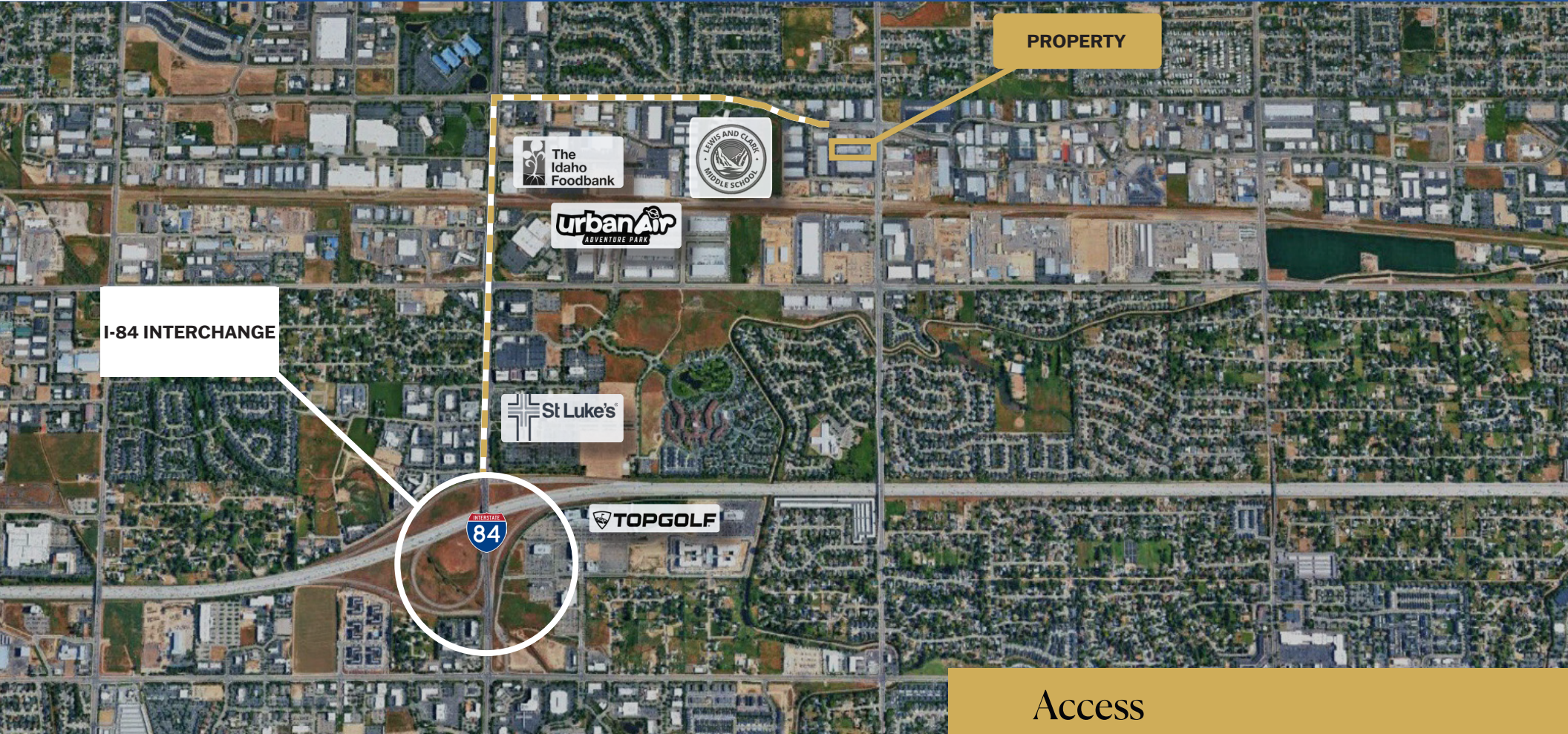




1,676 SF Industrial Space

Touchmark Industrial Park

619 N. CLOVERDALE RD.
BOISE, IDAHO



Access

- Boise Airport +/- 15 min / 8 miles
- I-84 Interstate +/- 5 min / 2 miles
- Downtown Boise +/- 20 min / 8 miles



ADLER
INDUSTRIAL

Visit adler-industrial.com for more information

90+

PROPERTIES ACQUIRED OR
DEVELOPED IN BOISE MSA



The largest industrial real estate
development and management
company in Idaho

Adler Industrial specializes in vertically integrated solutions for Class “A” industrial development, including developing, constructing, leasing, investing, and property management. With over 4 million square feet of acquired or developed buildings and 1,000 acres of land for future projects, we lead the market in providing comprehensive industrial solutions. Our sister company, Adler Realty Investments, founded in 1996, has acquired or developed 5.9 million square feet of properties, across all asset types nationwide.



Contact

Charity Nelson – Director of Leasing
cnelson@adler-industrial.com

adler-industrial.com

 (+1) 208-506-7170

 8665 W. Emerald Street, Suite 200,
Boise, ID 83704, USA