



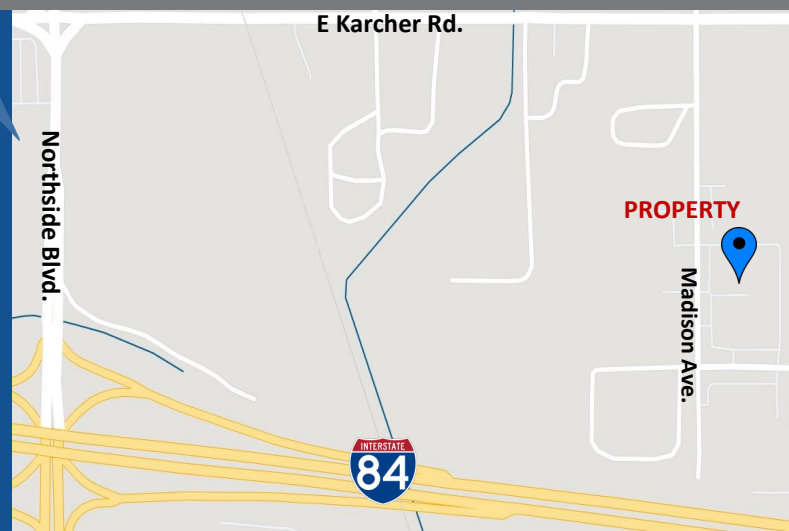
# MULTI-LEVEL 16,500 SF INDUSTRIAL SPACE & COLD STORAGE AVAILABLE FOR LEASE

2000 MADISON AVE. | NAMPA, IDAHO



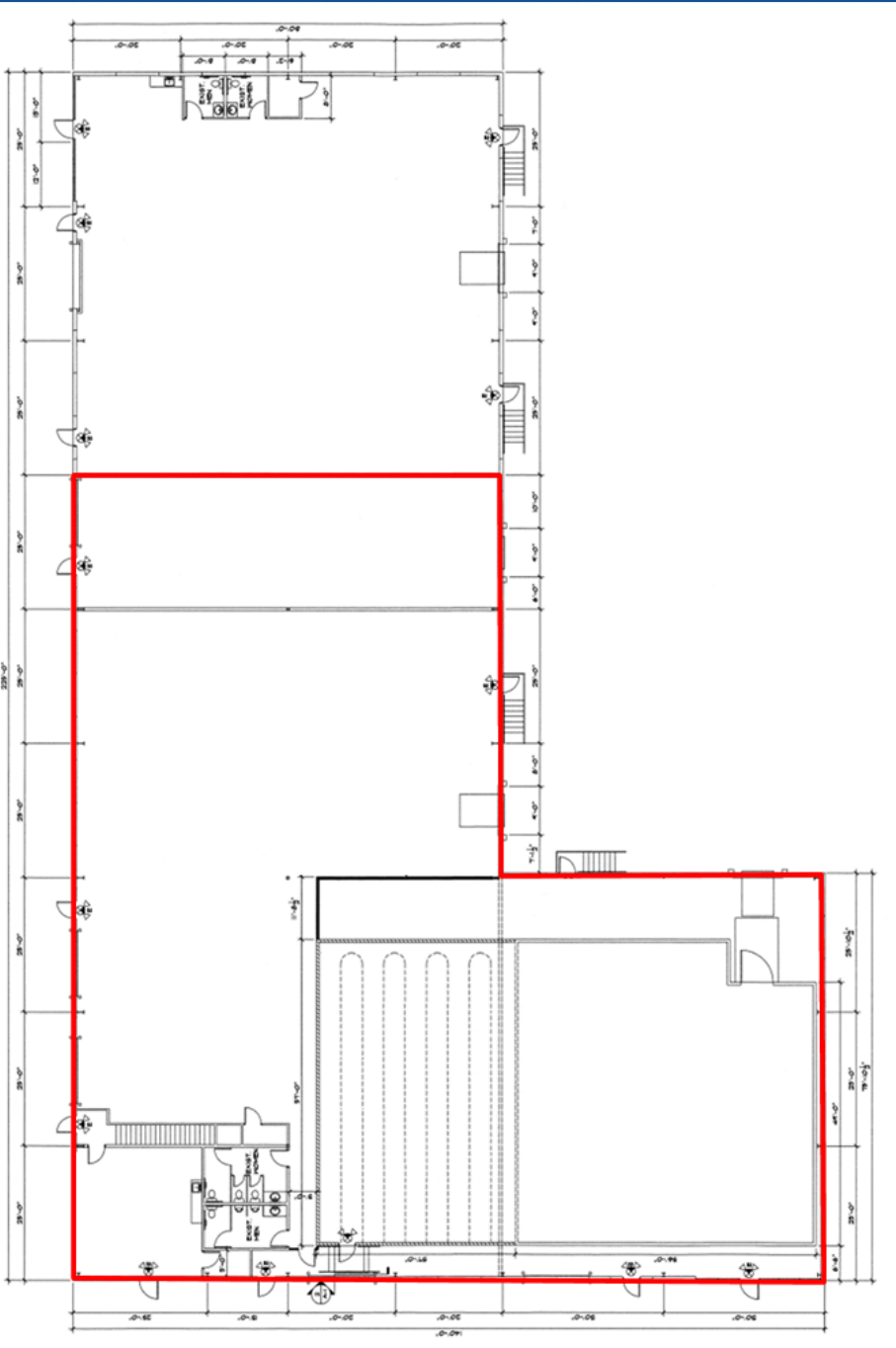
[WWW.ADLER-INDUSTRIAL.COM](http://WWW.ADLER-INDUSTRIAL.COM)

- ◆ 16,500 SF Available for Lease
- ◆ 5,173 SF of Freezer Space
- ◆ Two story office
- ◆ Easily Accessible to the I-84, just 1 mile to the property and under 30 minutes to the Boise Airport.



Contact:  
Charity Nelson    [cnelson@adler-industrial.com](mailto:cnelson@adler-industrial.com)

Adler Industrial, LLC  
8665 W. Emerald Street, Suite 200  
Boise, ID 83704    208-506-7170



## Property Information

- **Building size:** 22,500sf
- **Available:** 16,500sf
- **Total office:** 2,053sf
  - **1<sup>st</sup> floor:** 1,045sf
  - **2<sup>nd</sup> floor:** 1,008 sf
- **Cold Storage:** 5,173 sf
- **Year Built:** 1996
- **Docks:** 3
- **Drive in doors:** 5
- **Tenant:** Multi-tenant
- **Clear Height:** 24'
- **Fire sprinklers:** Yes
- **Lease type:** NNN
- **Construction:** Insulated Metal Panel
- **Available:** Q2 2024

[WWW.ADLER-INDUSTRIAL.COM](http://WWW.ADLER-INDUSTRIAL.COM)

Contact:  
Charity Nelson    cnelson@adler-industrial.com

Adler Industrial, LLC  
8665 W. Emerald Street, Suite 200  
Boise, ID 83704    208-506-7170