



# FOR LEASE - 88,140 SF SPEC INDUSTRIAL SPACE

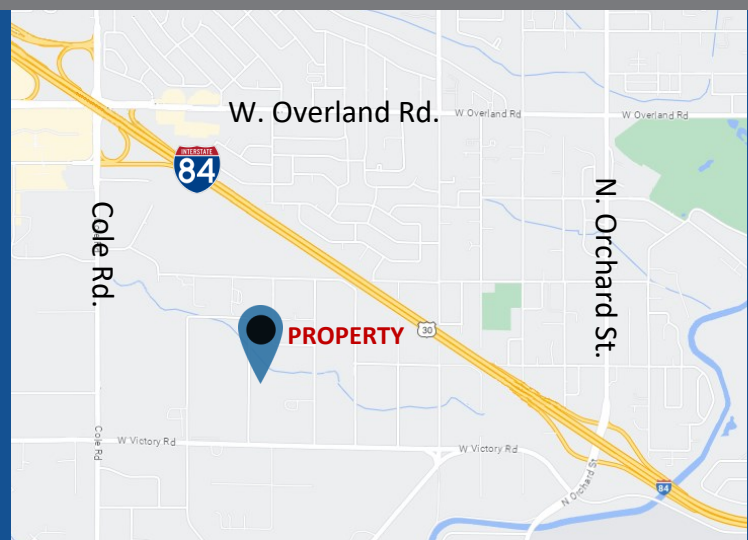
## AIRPORT PHASE II

2674 S. FRY ST. | BOISE, IDAHO



[WWW.ADLER-INDUSTRIAL.COM](http://WWW.ADLER-INDUSTRIAL.COM)

- ◆ 88,140 SF Available for Lease
- ◆ Under Construction - Completion: Q3 2024
- ◆ Divisible to 7,345 SF
- ◆ Customizable Tenant Improvements Available
- ◆ Easily Accessible to the I-84 and just 8 minutes to the Boise Airport.



Contact:  
Charity Nelson [cnelson@adler-industrial.com](mailto:cnelson@adler-industrial.com)

Adler Industrial, LLC  
8665 W. Emerald Street, Suite 200  
Boise, ID 83704 208-506-7170



2674 S. FRY ST. | BOISE, IDAHO



[WWW.ADLER-INDUSTRIAL.COM](http://WWW.ADLER-INDUSTRIAL.COM)

## Property Information

- **Status:** Under Construction
- **Building Type:** Industrial - Class A
- **Construction:** Concrete Tilt
- **Estimated Completion:** Q3 2024
- **Building Size:** 88,140 SF
- **Available for Lease:** 88,140 SF
- **Divisible By:** 7,345 SF
- **Lease Type:** NNN
- **Clear Height:** 24'
- **Fire:** ESFR
- **Doors:** 6 drive-in & 28 docks
- **Power:** 480 volt, 3-phase
- **Lighting:** LED with occupancy sensors
- **Parking:** 102 stalls
- **Heating:** Gas fired heating units

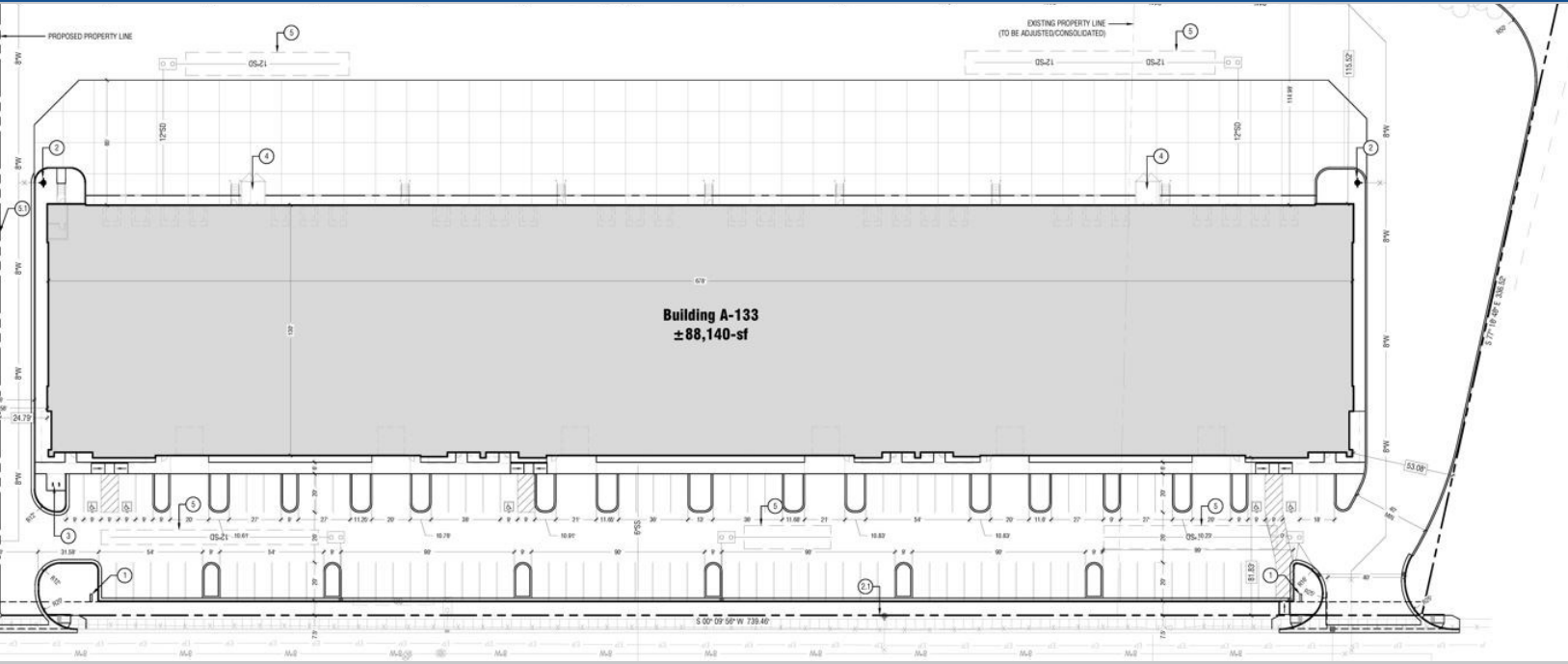
Contact:  
Charity Nelson    [cnelson@adler-industrial.com](mailto:cnelson@adler-industrial.com)

Adler Industrial, LLC  
8665 W. Emerald Street, Suite 200  
Boise, ID 83704    208-506-7170





# 2674 S. FRY ST. | BOISE, IDAHO



[WWW.ADLER-INDUSTRIAL.COM](http://WWW.ADLER-INDUSTRIAL.COM)

Contact:  
Charity Nelson [cnelson@adler-industrial.com](mailto:cnelson@adler-industrial.com)

Adler Industrial, LLC  
8665 W. Emerald Street, Suite 200  
Boise, ID 83704 208-506-7170