



FOR LEASE - 88,140 SF SPEC INDUSTRIAL SPACE

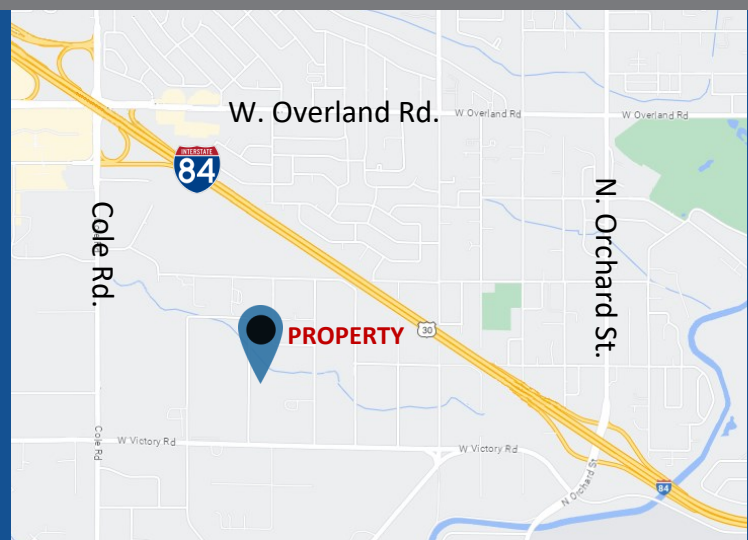
AIRPORT PHASE II

2674 S. FRY ST. | BOISE, IDAHO



WWW.ADLER-INDUSTRIAL.COM

- ◆ 88,140 SF Available for Lease
- ◆ Under Construction - Completion: October 2024
- ◆ Divisible to 7,345 SF
- ◆ Customizable Tenant Improvements Available
- ◆ Easily Accessible to the I-84 and just 8 minutes to the Boise Airport.



Contact:
Charity Nelson cnelson@adler-industrial.com

Adler Industrial, LLC
8665 W. Emerald Street, Suite 200
Boise, ID 83704 208-506-7170



2647 S. FRY ST. | BOISE, IDAHO



WWW.ADLER-INDUSTRIAL.COM

Property Information

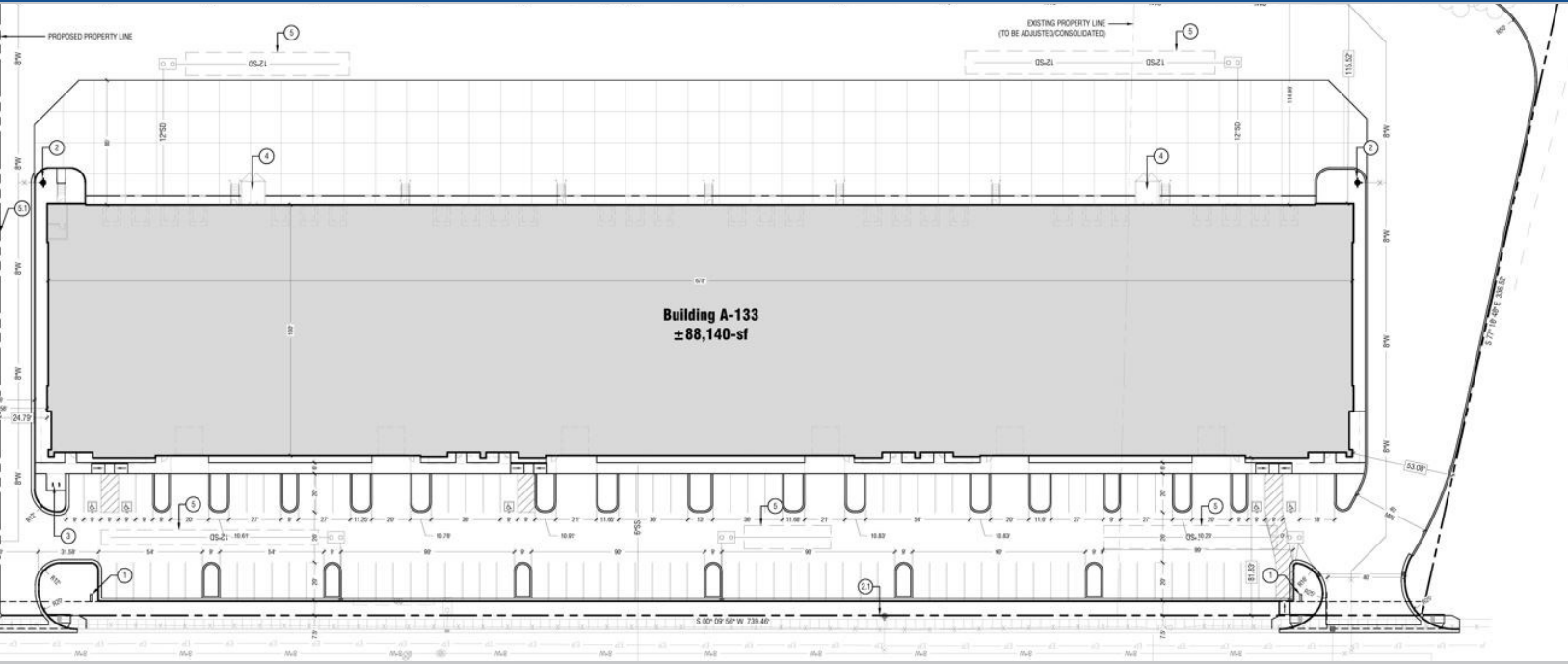
- **Status:** In Development
- **Building Type:** Industrial - Class A
- **Construction:** Concrete Tilt
- **Estimated Completion:** Q3 2024
- **Building Size:** 88,140 SF
- **Available for Lease:** 88,140 SF
- **Divisible By:** 7,345 SF
- **Lease Type:** NNN
- **Clear Height:** 24'
- **Fire:** ESFR
- **Doors:** 6 drive-in & 28 docks
- **Power:** 480 volt, 3-phase
- **Lighting:** LED with occupancy sensors
- **Parking:** 102 stalls
- **Heating:** Gas fired heating units

Contact:
Charity Nelson cnelson@adler-industrial.com

Adler Industrial, LLC
8665 W. Emerald Street, Suite 200
Boise, ID 83704 208-506-7170



2647 S. FRY ST. | BOISE, IDAHO



WWW.ADLER-INDUSTRIAL.COM

Contact:
Charity Nelson cnelson@adler-industrial.com

Adler Industrial, LLC
8665 W. Emerald Street, Suite 200
Boise, ID 83704 208-506-7170