



# 26,992 SF Industrial Space 2,856 SF Office Space Available Now

2128 N. DEVLIN WAY | NAMPA, IDAHO



## Property Highlights

- 26,911 SF Available for Lease
- 2,856 SF Office Space
- 627 SF Mezzanine Storage
- Available Now
- Easily Accessible to the I-84, just 1 mile to the property and 20 minutes to the Boise Airport.



### Contact

**Charity Nelson** – Leasing Manager  
cnelson@adler-industrial.com

[adler-industrial.com](http://adler-industrial.com)

 (+1) 208-506-7170

 8665 W. Emerald Street, Suite 200,  
Boise, ID 83704, USA



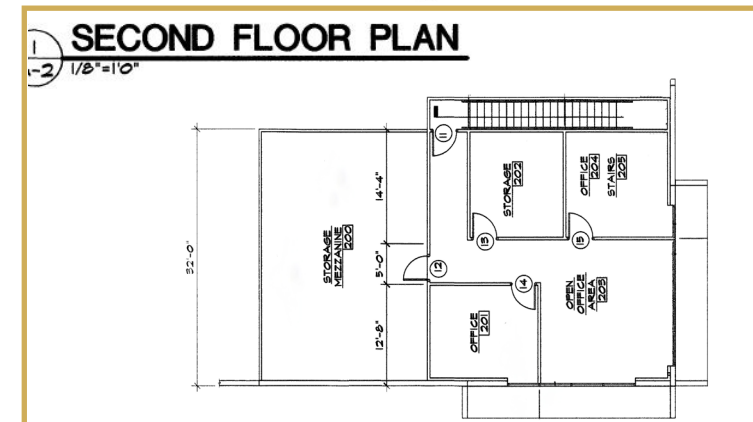
# 26,992 SF Industrial space

Available Now

2128 N. DEVLIN WAY  
NAMPA, IDAHO

## Building Plan

- **BUILDING SIZE:** 65,000 SF
- **AVAILABLE FOR LEASE:** 26,992 SF
- **STATUS:** Shell Complete
- **BUILDING TYPE:** Industrial - Class A
- **CONSTRUCTION:** Concrete Tilt
- **YEAR BUILT:** 2009
- **LEASE TYPE:** NNN
- **CLEAR HEIGHT:** 24'
- **FIRE:** ESFR
- **DOORS:** 2 Grade Level & 6 Docks
- **POWER:** 480 volt, 3-phase
- **LIGHTING:** LED with Occupancy Sensors
- **HEATING:** Gas Fired



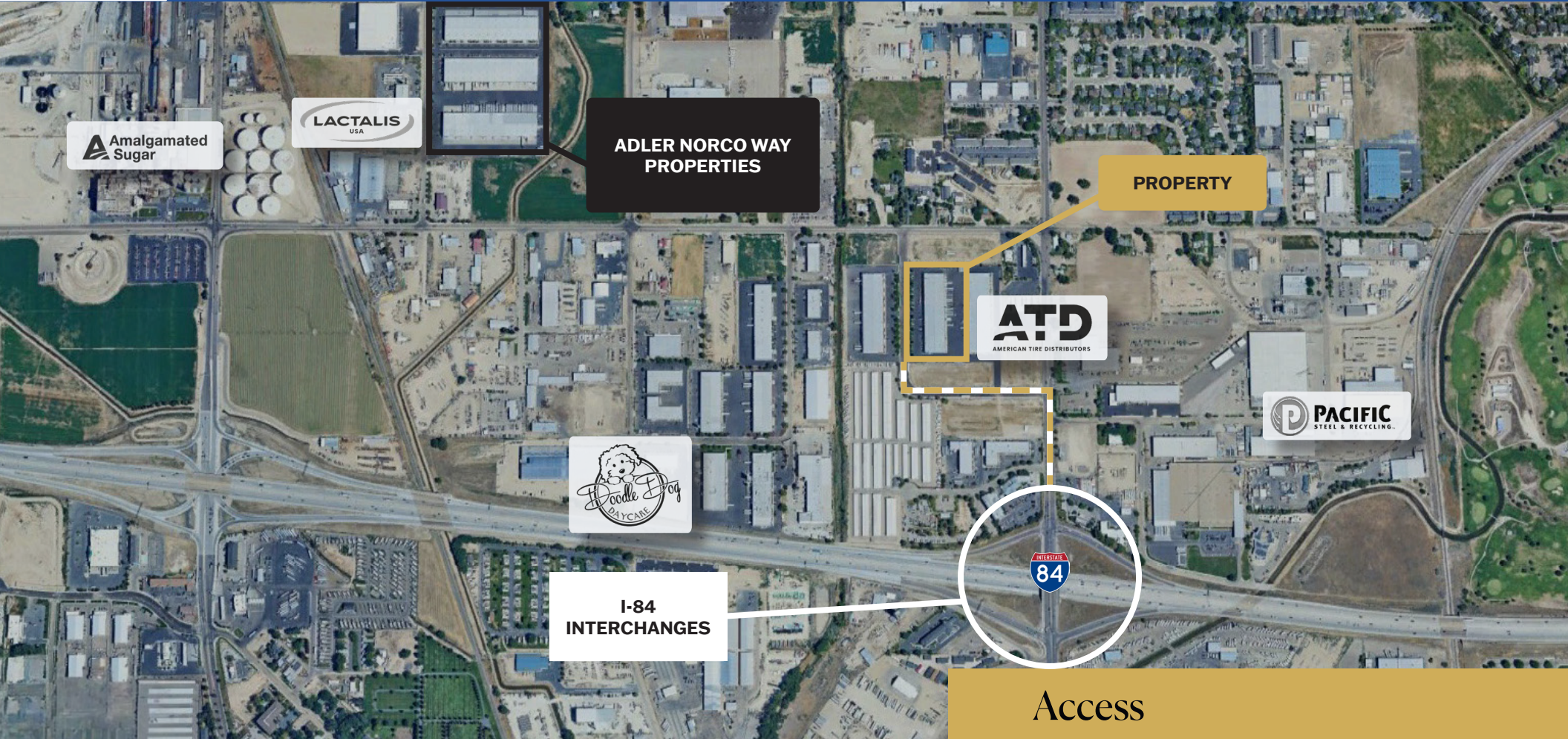
 For rates, please contact our  
**Leasing Manager**



# 26,992 SF Industrial Space

2,856 SF Office Space Available Now

2128 N. DEVLIN WAY  
NAMPA, IDAHO



## Access

Boise Airport	+/- 20 min / 19 miles
I-84 Interstate	+/- 2 min / 0.6 miles
Downtown Boise	+/- 20 min / 20 miles



**ADLER**  
INDUSTRIAL

Visit [adler-industrial.com](https://adler-industrial.com) for more information

**80+**

**PROPERTIES ACQUIRED OR  
DEVELOPED IN BOISE MSA**



The largest industrial real estate  
development and management  
company in Idaho

Adler Industrial specializes in vertically integrated solutions for Class “A” industrial development, including developing, constructing, leasing, investing, and property management. With over 4 million square feet of acquired or developed buildings and 1,000 acres of land for future projects, we lead the market in providing comprehensive industrial solutions. Our sister company, Adler Realty Investments, founded in 1996, has acquired or developed 5.9 million square feet of properties, across all asset types nationwide.




### Contact

**Charity Nelson** – Leasing Manager  
[cnelson@adler-industrial.com](mailto:cnelson@adler-industrial.com)

[adler-industrial.com](https://adler-industrial.com)

 (+1) 208-506-7170

 8665 W. Emerald Street, Suite 200,  
Boise, ID 83704, USA