



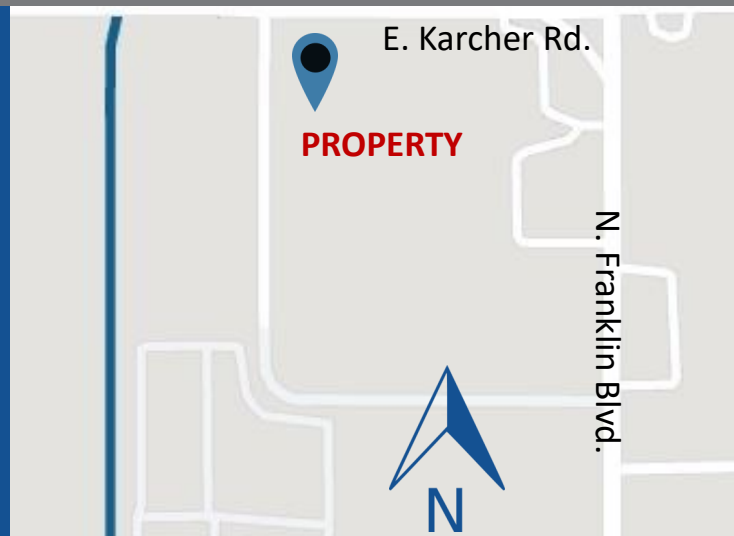
**FOR LEASE - 26,992 SF INDUSTRIAL SPACE  
WITH 2,856 SF OFFICE SPACE**

**2128 N. DEVLIN WAY | NAMPA, IDAHO**



[WWW.ADLER-INDUSTRIAL.COM](http://WWW.ADLER-INDUSTRIAL.COM)

- ◆ 26,992 SF Available for Lease
- ◆ Office 1st floor – 1,664 SF. Office 2nd floor – 992 SF.
- ◆ Mezzanine storage – 627 SF
- ◆ Available - March 2024

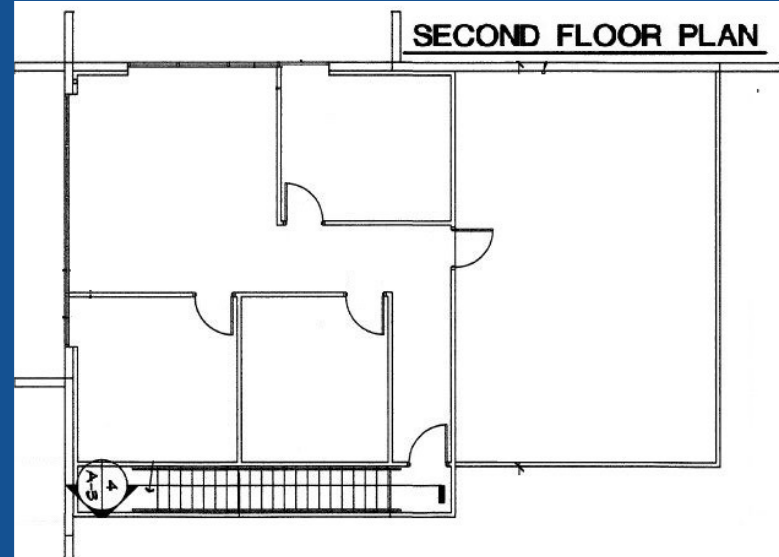
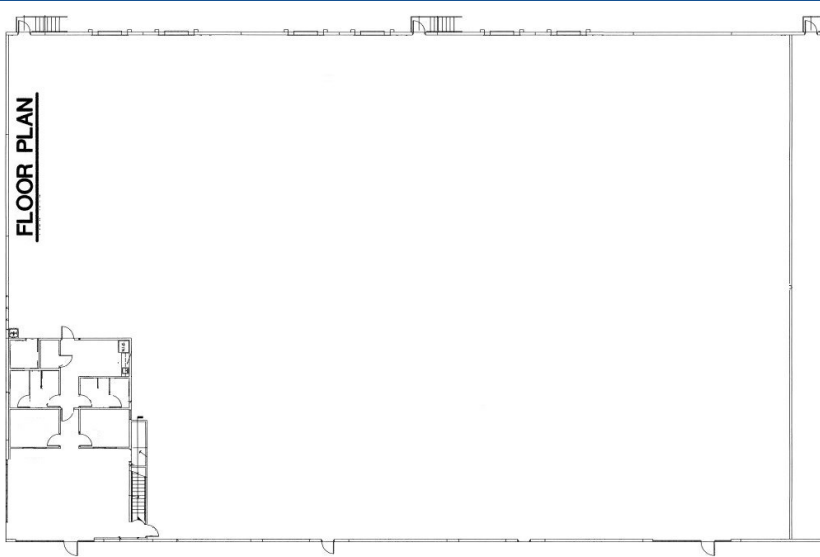


Contact:  
Charity Nelson [cnelson@adler-industrial.com](mailto:cnelson@adler-industrial.com)

Adler Industrial, LLC  
8665 W. Emerald Street, Suite 200  
Boise, ID 83704 208-506-7170



2128 N. DEVLIN WAY | NAMPA, IDAHO



[WWW.ADLER-INDUSTRIAL.COM](http://WWW.ADLER-INDUSTRIAL.COM)

## Property Information

- **Building Type:** Industrial - Class A
- **Construction:** Concrete Tilt
- **Available:** March 2024
- **Building Size:** 65,000 SF
- **Available for Lease:** 26,992 SF
- **Lease Type:** NNN
- **Clear Height:** 24'
- **Fire:** ESFR
- **Doors:** 2 grade level & 6 docks
- **Power:** 480 volt, 3-phase
- **Lighting:** LED with occupancy sensors
- **Parking:** Paved
- **Heating:** Gas fired

Contact:  
Charity Nelson    [cnelson@adler-industrial.com](mailto:cnelson@adler-industrial.com)

Adler Industrial, LLC  
8665 W. Emerald Street, Suite 200  
Boise, ID 83704    208-506-7170