



FOR LEASE

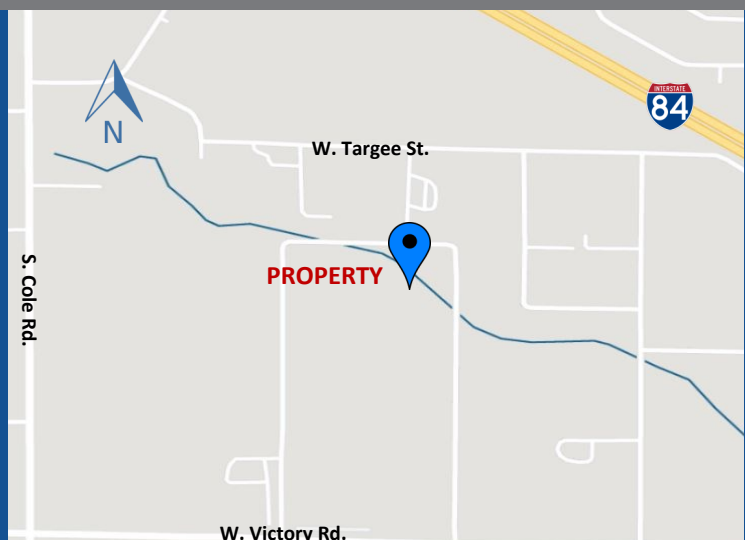
39,750 SF INDUSTRIAL SPACE

2545 S. FRY STREET | BOISE, IDAHO



[WWW.ADLER-INDUSTRIAL.COM](http://WWW.ADLER-INDUSTRIAL.COM)

- ◆ 92,750 SF Building
- ◆ 39,750 SF Available for Lease
- ◆ Divisible to: 39,750 SF
- ◆ Shell Completed
- ◆ Customizable Tenant Improvements Available
- ◆ Close proximity to the Boise Airport



Contacts:  
Charity Nelson    [cnelson@adler-industrial.com](mailto:cnelson@adler-industrial.com)

Adler Industrial, LLC  
8665 W. Emerald Street, Suite 200  
Boise, ID 83704    208-629-2719

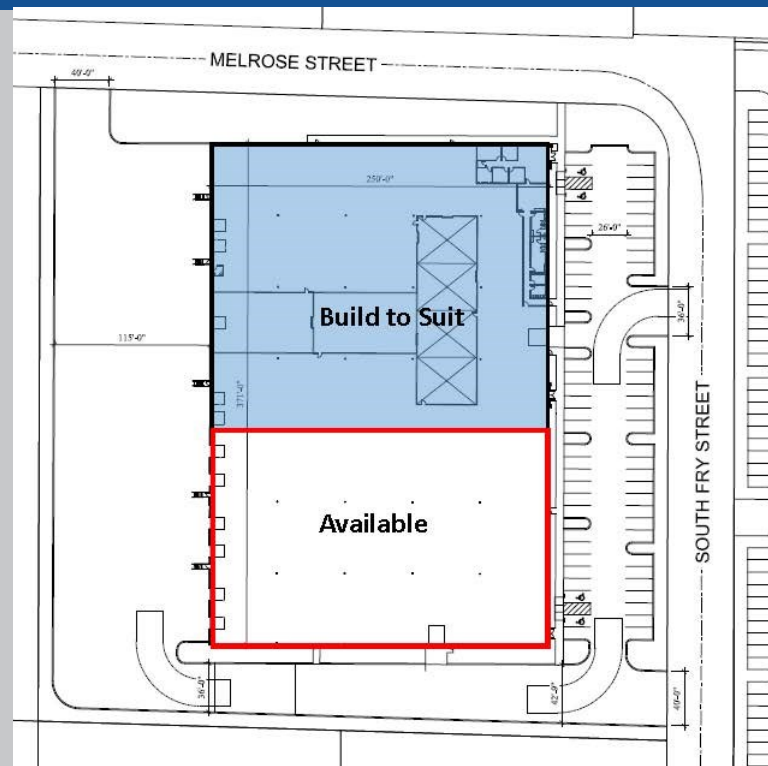


2545 S. FRY STREET | BOISE, IDAHO



## Property Information

- **Status:** Shell Complete
- **Building Type:** Industrial - Class A
- **Construction:** Pre-Engineered Metal
- **Year Built:** 2023
- **Building Size:** 92,750 SF
- **Available for Lease:** 39,750 SF
- **Lease Type:** NNN
- **Clear Height:** 28'
- **Doors:** 6 Dock-High, 2 Drive-In
- **Lighting:** LED with Motion Sensors



Contacts:  
Charity Nelson    cnelson@adler-industrial.com

Adler Industrial, LLC  
8665 W. Emerald Street, Suite 200  
Boise, ID 83704    208-629-2719