



345 Acres of Build to Suit Space Pleasant Valley Business Park

6310 LAKE HAZEL RD.
NEAR S. ORCHARD RD. & LAKE HAZEL RD. | BOISE, IDAHO



Property Highlights

- Less than 3 miles to I-84
- Close Proximity to the Boise Airport
- Build to Suit Opportunities
- High-End Mixed-Use Business Park
- All Utilities Installed
- Less Than 10 Miles to Micron Technology Headquarters



Contact

Charity Nelson – Director of Leasing
cnelson@adler-industrial.com

adler-industrial.com

 (+1) 208-506-7170

 8665 W. Emerald Street, Suite 200,
Boise, ID 83704, USA

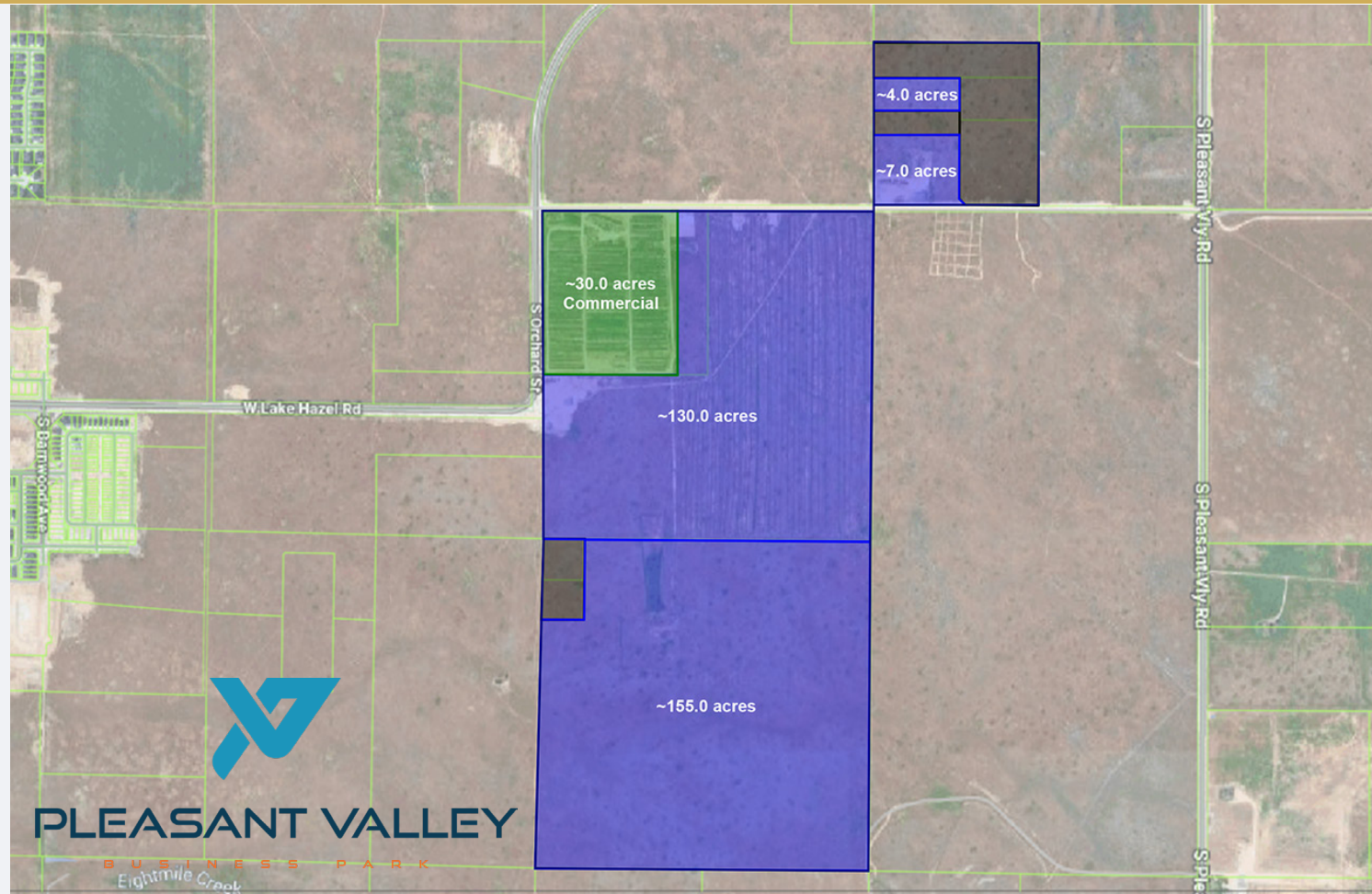


345 Acres Build to Suit Space Pleasant Valley Business Park

6310 LAKE HAZEL RD.
NEAR S. ORCHARD RD. & LAKE HAZEL RD. | BOISE, IDAHO

Business Park Plan

Adler Industrial is proud to present +/- 345 acres located at the corner of West Lake Hazel and South Orchard Street in Boise, Idaho. This mixed zone parcel is available for build to suit opportunities in the newest addition to the already robust Adler Industrial portfolio.



For rates, please contact our
Leasing Manager



Recent Adler Industrial Construction Build to Suit Projects



Johnson Thermal Systems
NAMPA, IDAHO | 170,000 SF MANUFACTURING



Frito Lay
BOISE, IDAHO | 90,000 SF DISTRIBUTION



Convoy Supply
NAMPA, IDAHO | 35,000 SF WAREHOUSE/DISTRIBUTION



White Cap
BOISE, IDAHO | 30,000 SF WAREHOUSE/SALES



ADLER
INDUSTRIAL

Visit adler-industrial.com for more information

80+

**PROPERTIES ACQUIRED OR
DEVELOPED IN BOISE MSA**



The largest industrial real estate
development and management
company in Idaho

Adler Industrial specializes in vertically integrated solutions for Class “A” industrial development, including developing, constructing, leasing, investing, and property management. With over 4 million square feet of acquired or developed buildings and 1,000 acres of land for future projects, we lead the market in providing comprehensive industrial solutions. Our sister company, Adler Realty Investments, founded in 1996, has acquired or developed 5.9 million square feet of properties, across all asset types



Contact

Charity Nelson – Director of Leasing
cnelson@adler-industrial.com



(+1) 208-506-7170



8665 W. Emerald Street, Suite 200,
Boise, ID 83704, USA