



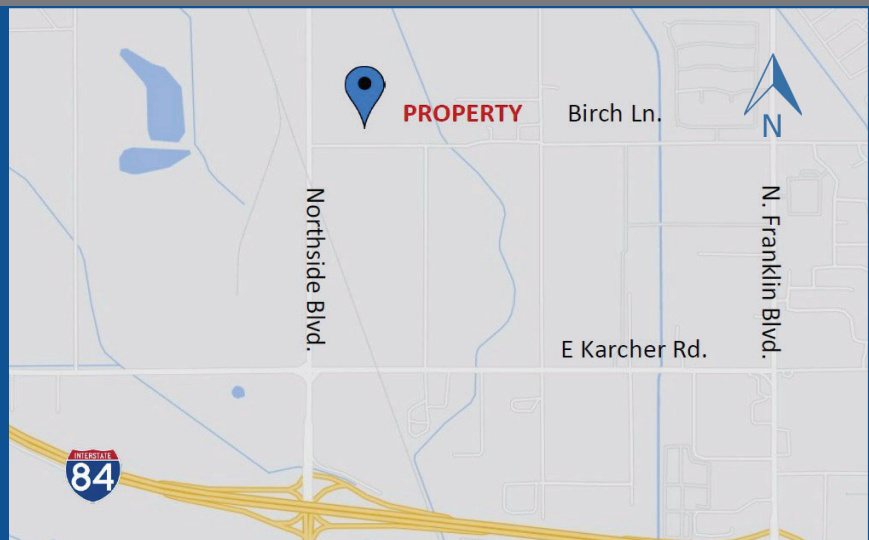
FOR LEASE— 210,000 SF INDUSTRIAL SPACE AI NORTHSIDE INDUSTRIAL PARK PHASE II

16734 NORTHSIDE BLVD. | NAMPA, IDAHO



WWW.ADLER-INDUSTRIAL.COM

- ◆ 210,000 SF Available for Lease
- ◆ Divisible to 21,000 SF
- ◆ Customizable Tenant Improvements Available
- ◆ Easily Accessible to the I-84, just 1 mile to the property



Contacts:

Brad Miller

bmiller@adler-industrial.com

Charity Nelson

cnelson@adler-industrial.com

Adler Industrial, LLC

8665 W. Emerald Street, Suite 200

Boise, ID 83704 208-506-7170



16734 NORTHSIDE BLVD. | NAMPA, IDAHO



WWW.ADLER-INDUSTRIAL.COM

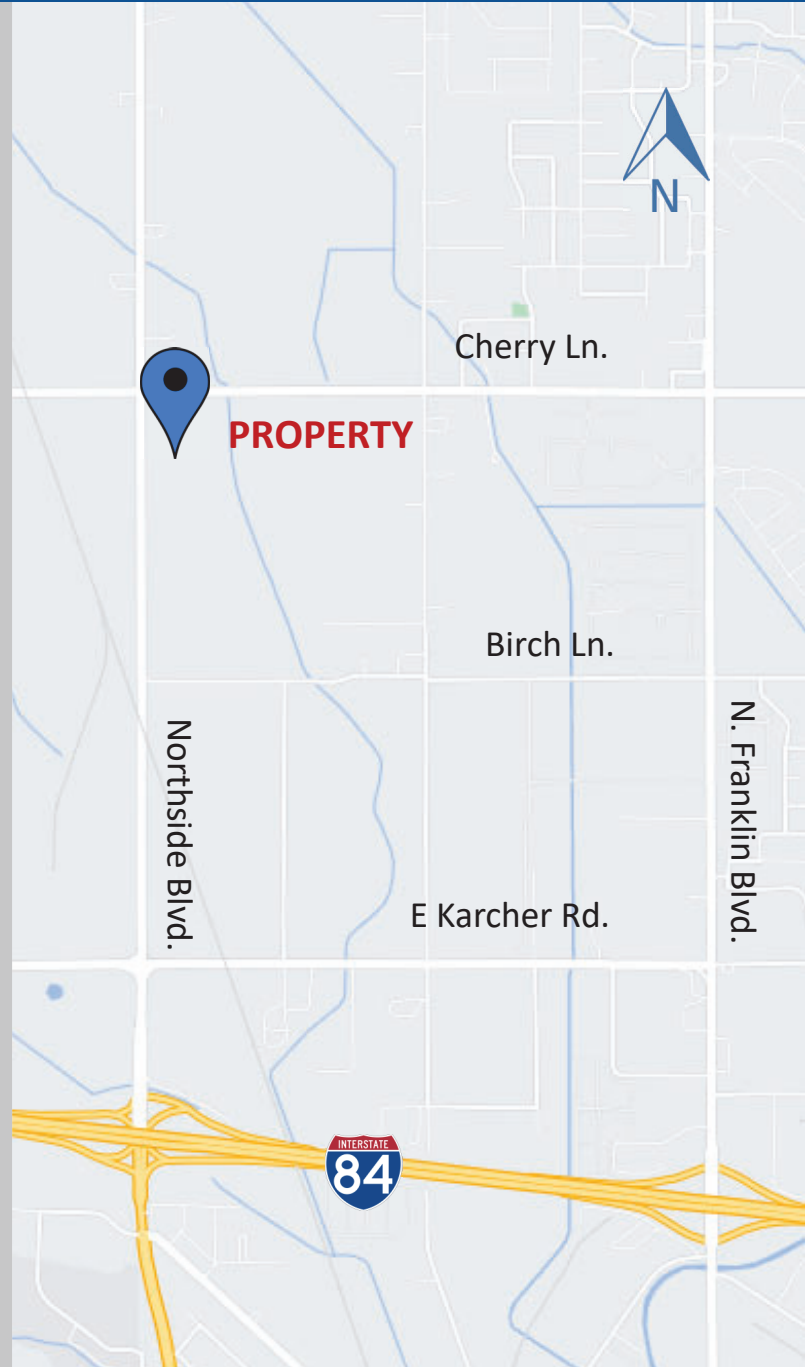
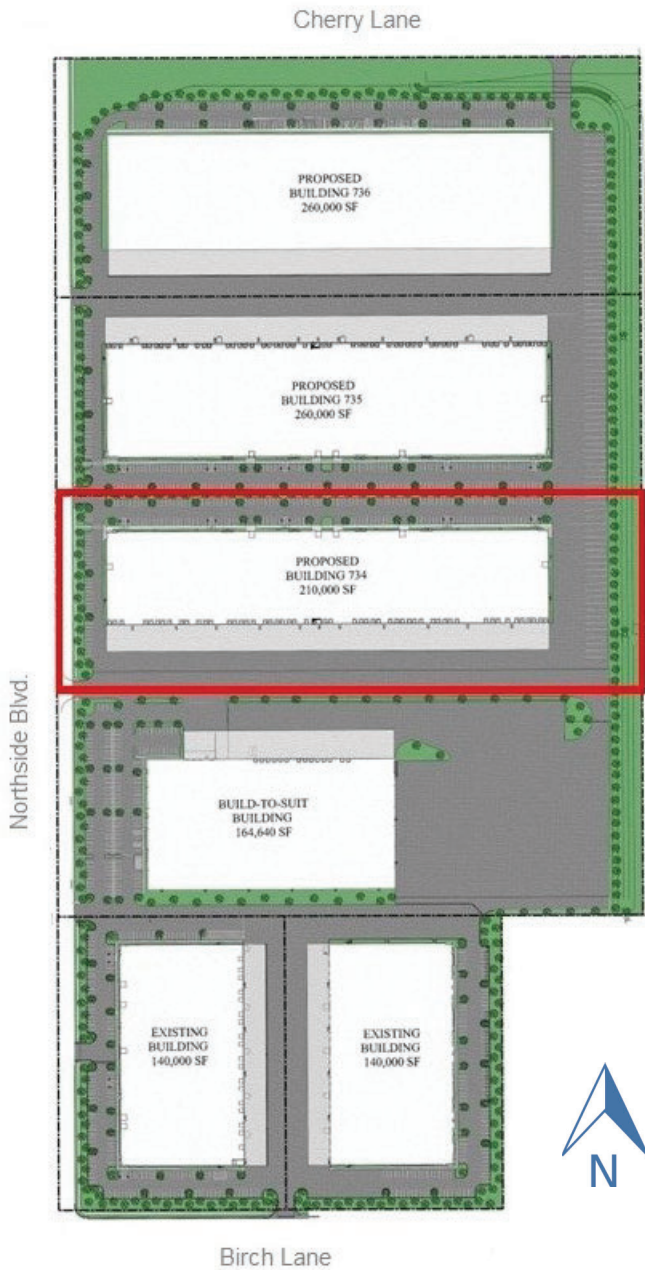
Property Information

- **Status:** In Development
- **Building Type:** Industrial - Class A
- **Construction:** Concrete Tilt
- **Year Built:** 2022
- **Building Size:** 210,000 SF with BTS Office
- **Available for Lease:** 210,000 SF
- **Divisible By:** 21,000 SF
- **Lease Type:** NNN
- **Clear Height:** 32'
- **Fire:** ESFR System with Fire Pump
- **Doors:** 40 Dock High, 10 Drive-Ins
- **60' Speed Bays**
- **Power:** 800 Amps—480/22—3 Phase
- **Lighting:** LED with Motion Sensors
- **Skylights:** Throughout
- **Heating:** Cambridge Gas Fired Handling Systems

Contacts:

Brad Miller bmiller@adler-industrial.com
Charity Nelson cnelson@adler-industrial.com

Adler Industrial, LLC
8665 W. Emerald Street, Suite 200
Boise, ID 83704 208-506-7170



WWW.ADLER-INDUSTRIAL.COM

Contacts:

Brad Miller

bmiller@adler-industrial.com

Charity Nelson

cnelson@adler-industrial.com

Adler Industrial, LLC

8665 W. Emerald Street, Suite 200

Boise, ID 83704 208-506-7170