



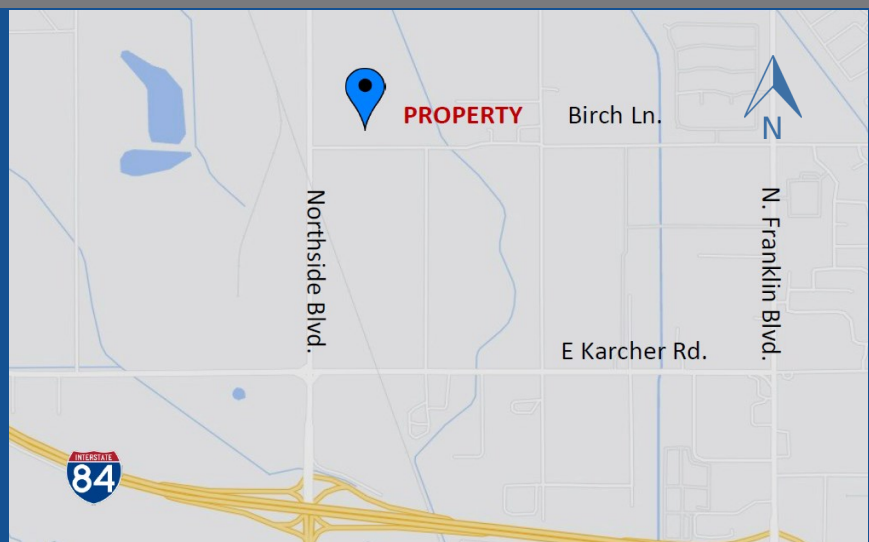
# FOR LEASE— 210,000 SF INDUSTRIAL SPACE AI NORTHSIDE INDUSTRIAL PARK PHASE II

16790 NORTHSIDE BLVD. | NAMPA, IDAHO



[WWW.ADLER-INDUSTRIAL.COM](http://WWW.ADLER-INDUSTRIAL.COM)

- ◆ 210,000 SF Available for Lease
- ◆ Divisible to 21,000 SF
- ◆ Customizable Tenant Improvements Available
- ◆ Easily Accessible to the I-84, just 1 mile to the property



Contacts:  
Charity Nelson    [cnelson@adler-industrial.com](mailto:cnelson@adler-industrial.com)

Adler Industrial, LLC  
8665 W. Emerald Street, Suite 200  
Boise, ID 83704    208-506-7170



16790 NORTHSIDE BLVD. | NAMPA, IDAHO



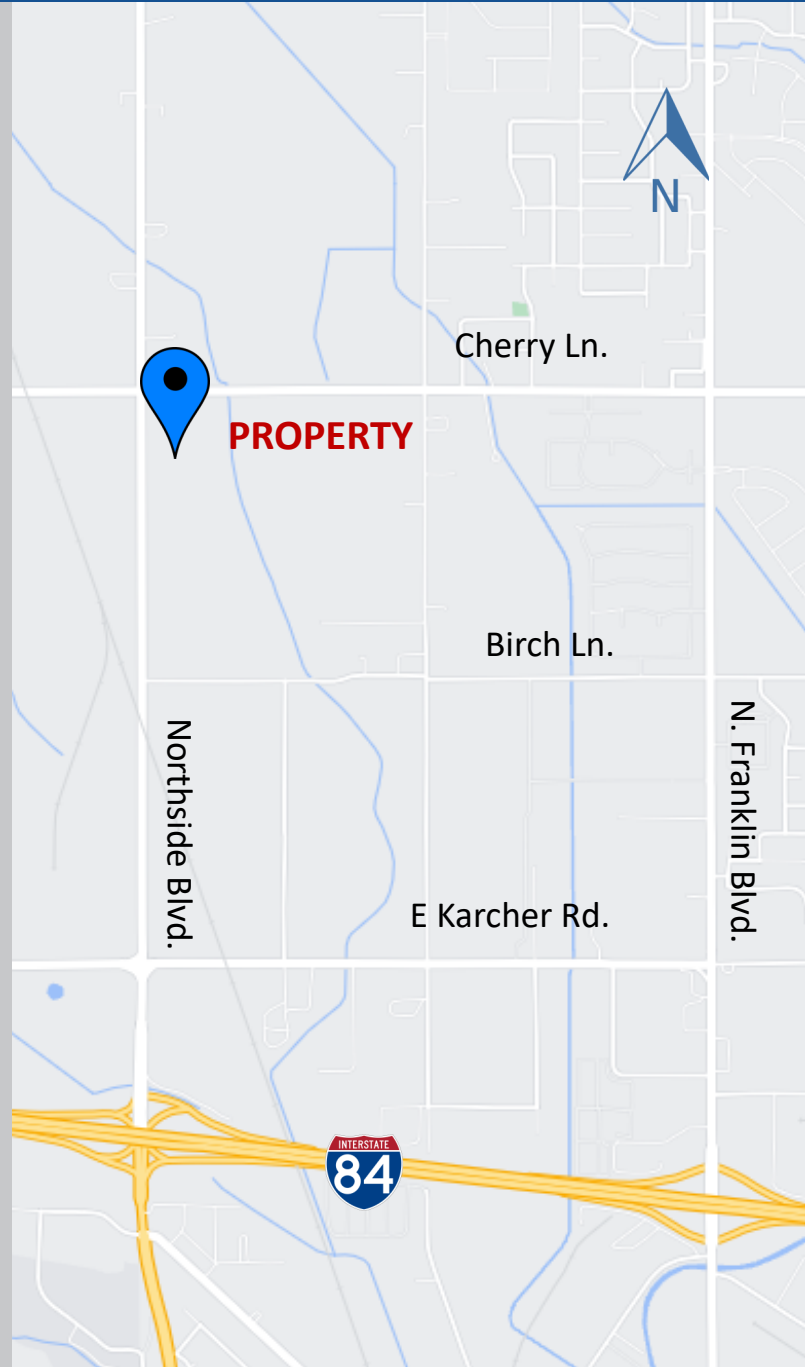
[WWW.ADLER-INDUSTRIAL.COM](http://WWW.ADLER-INDUSTRIAL.COM)

## Property Information

- **Status:** Permit Ready
- **Building Type:** Industrial - Class A
- **Construction:** Concrete Tilt
- **Building Size:** 210,000 SF with BTS Office
- **Available for Lease:** 210,000 SF
- **Divisible By:** 21,000 SF
- **Lease Type:** NNN
- **Clear Height:** 32'
- **Fire:** ESFR System with Fire Pump
- **Doors:** 40 Dock High, 10 Drive-Ins
- **60' Speed Bays**
- **Power:** 800 Amps—480/22—3 Phase
- **Lighting:** LED with Motion Sensors
- **Skylights:** Throughout
- **Heating:** Cambridge Gas Fired Handling Systems

Contacts:  
Charity Nelson    [cnelson@adler-industrial.com](mailto:cnelson@adler-industrial.com)

Adler Industrial, LLC  
8665 W. Emerald Street, Suite 200  
Boise, ID 83704    208-506-7170



[WWW.ADLER-INDUSTRIAL.COM](http://WWW.ADLER-INDUSTRIAL.COM)

Contacts:  
Charity Nelson [cnelson@adler-industrial.com](mailto:cnelson@adler-industrial.com)

Adler Industrial, LLC  
8665 W. Emerald Street, Suite 200  
Boise, ID 83704 208-506-7170