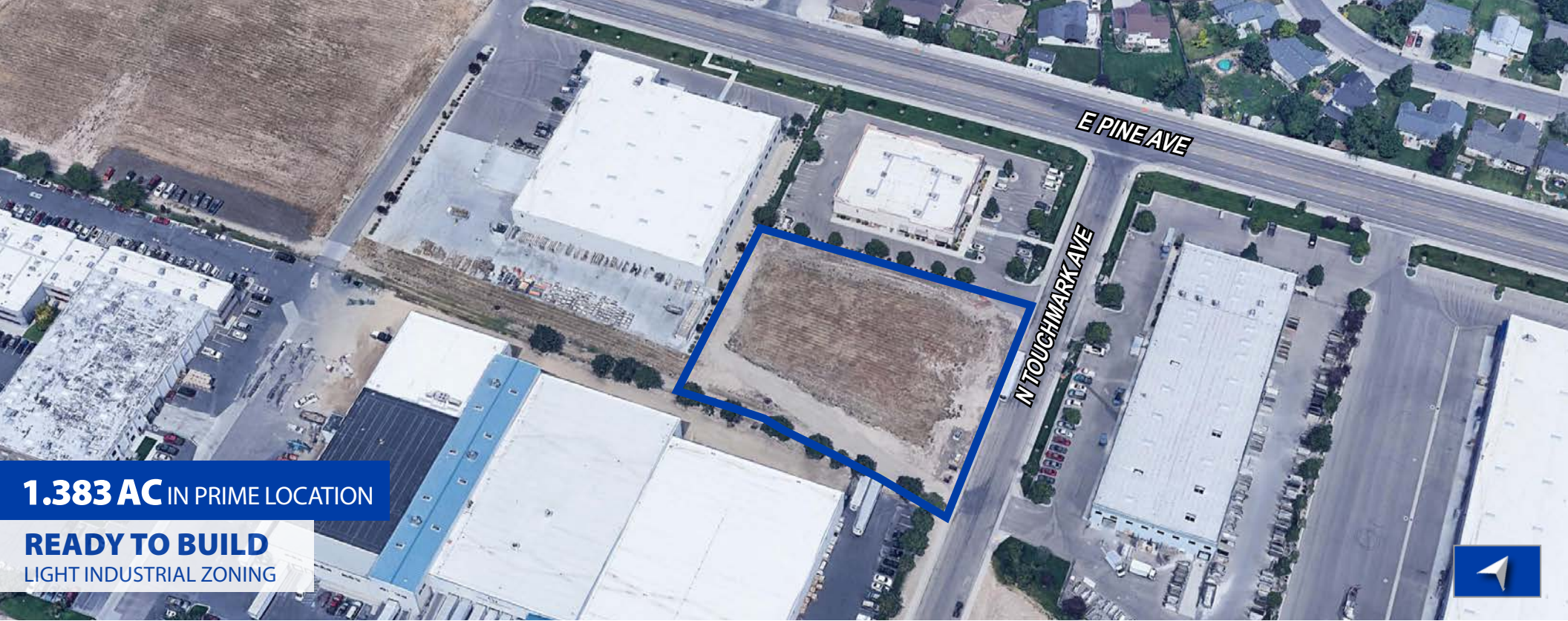




INDUSTRIAL LAND FOR SALE TOUCHMARK & PINE

N TOUCHMARK AVE & E PINE AVE | MERIDIAN, ID 83636

COMMERCIAL



1.383 AC IN PRIME LOCATION

READY TO BUILD
LIGHT INDUSTRIAL ZONING

CONTACT

Sam McCaskill

208.947.0804

[✉ sam@tokcommercial.com](mailto:sam@tokcommercial.com)

Michael Ballantyne, SIOR, CCIM

208.947.0831

[✉ mjb@tokcommercial.com](mailto:mjb@tokcommercial.com)

PROPERTY INFORMATION

PARCEL	SIZE	PRICE
Parcel R7138500030 N. Touchmark Ave & E. Pine Ave	1.383 AC 60,253 SF	\$512,150.50 \$8.50/SF

LISTING COMMENTS

Rare opportunity for Light Industrial Land in Meridian.

Great central location off of one of Idaho's busiest arterials.

Close proximity to freeway access.

I-L Light Industrial zoning.

Updated 12/10/20

This information was obtained from sources believed reliable but cannot be guaranteed. Any opinions or estimates are used for example only.

tokcommercial.com



INDUSTRIAL LAND FOR SALE TOUCHMARK & PINE

N TOUCHMARK AVE & E PINE AVE | MERIDIAN, ID 83636

RARE MERIDIAN LIGHT INDUSTRIAL ZONING



1.383 AC
I-L Zoning
Touchmark Ave
& E Pine Avenue

ALSO AVAILABLE
2.149 AC
C-G Zoning
3437 E. Pine Avenue

The Idaho
Foodbank

Albertsons
Distribution
Center

Rise Volleyball
Academy

Lewis & Clark
Middle School



EAGLERD

48,998 VPD

9,994 VPD

E PINE AVE

N TOUCHMARK AVE





INDUSTRIAL LAND FOR SALE TOUCHMARK & PINE

N TOUCHMARK AVE & E PINE AVE | MERIDIAN, ID 83636

EAGLE ROAD & FAIRVIEW AVENUE ACCESS

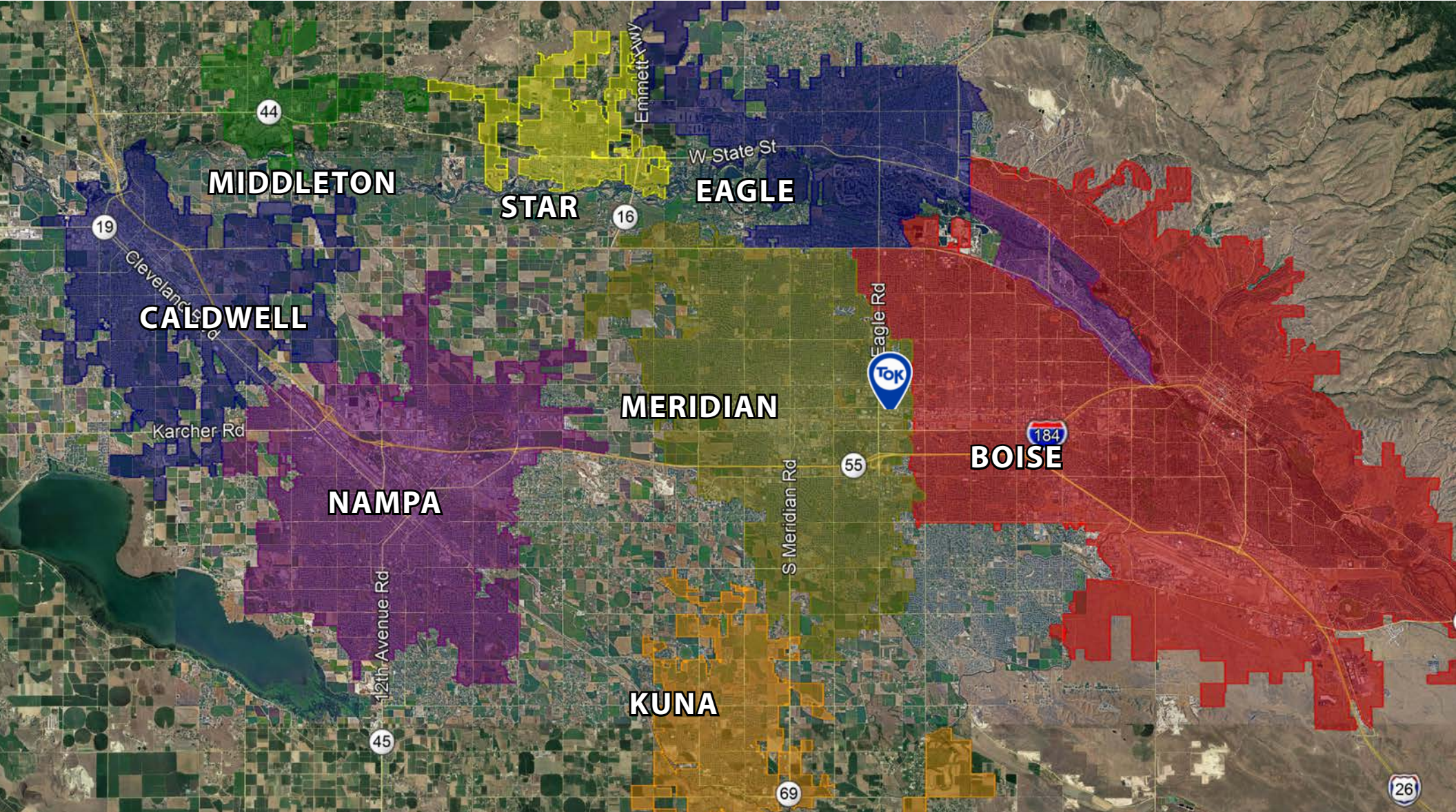




INDUSTRIAL LAND FOR SALE **TOUCHMARK & PINE**

N TOUCHMARK AVE & E PINE AVE | MERIDIAN, ID 83636

COMMERCIAL



Updated 12/10/20

This information was obtained from sources believed reliable but cannot be guaranteed. Any opinions or estimates are used for example only.

tokcommercial.com

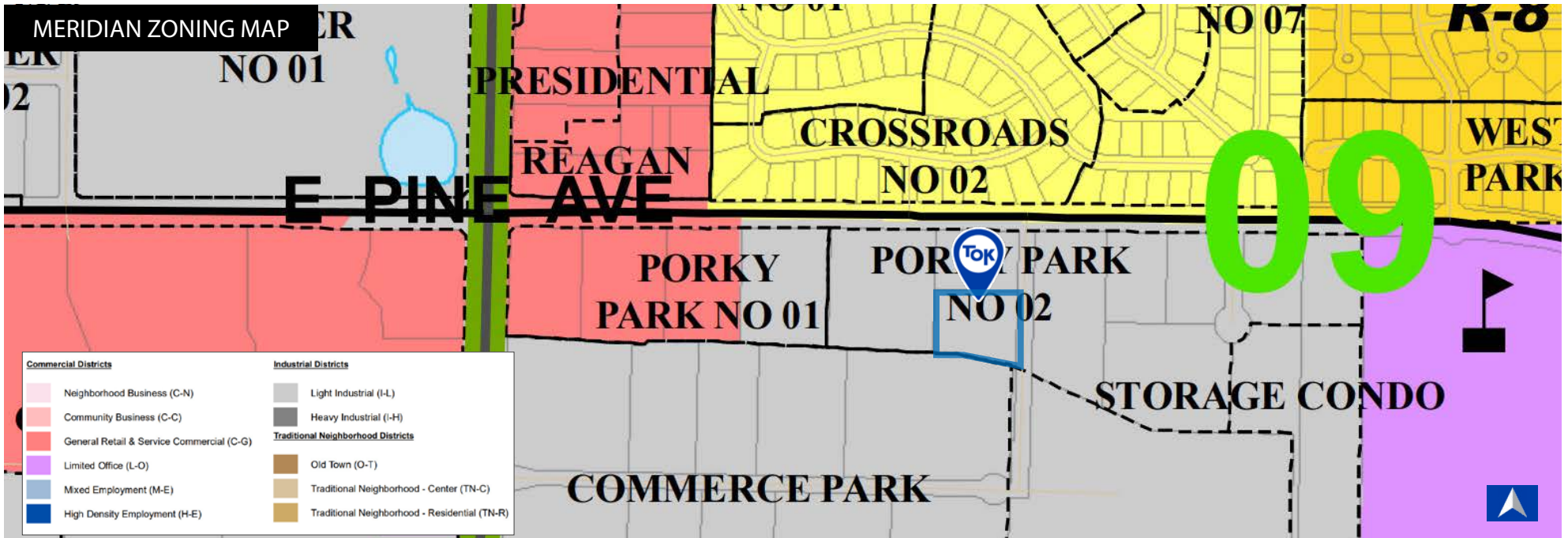




INDUSTRIAL LAND FOR SALE TOUCHMARK & PINE

N TOUCHMARK AVE & E PINE AVE | MERIDIAN, ID 83636

COMMERCIAL



(I-L) LIGHT INDUSTRIAL DISTRICT:

The purpose of the I-L District is to provide for convenient employment centers of light manufacturing, research and development, warehousing, and distributing. In accord with the Meridian Comprehensive Plan, the I-L District is intended to encourage the development of industrial uses that are clean, quiet and free of hazardous or objectionable elements and that are operated, entirely, or almost entirely, within enclosed structures. Accessibility to transportation systems is a requirement of this district. (Meridian City Code 11-2C-1)

(I-L) ZONING	Animal Care	Parking Facility
	Contractor's Yard	Public Utility
ALLOWED USES	Dispatch Center	Recycling Center
	Equipment Rental	Storage Facility
	Flex Space	Terminal, Freight or Truck
	Food/Beverage Processing	Vehicle Impound
	Indoor Shooting Range	Vehicle Repair
	Industry, Light	Vehicle Sale
	Laundry/Dry Cleaning	Warehouse
	Mortuary	Warehouse Sales

